

The Lady Kildare Room

Lady Kildare was Lady Louisa's sister. She lived at Carton House so they were neighbours. She had a whole room named after her.

Today the room has a beautiful display of miniatures!

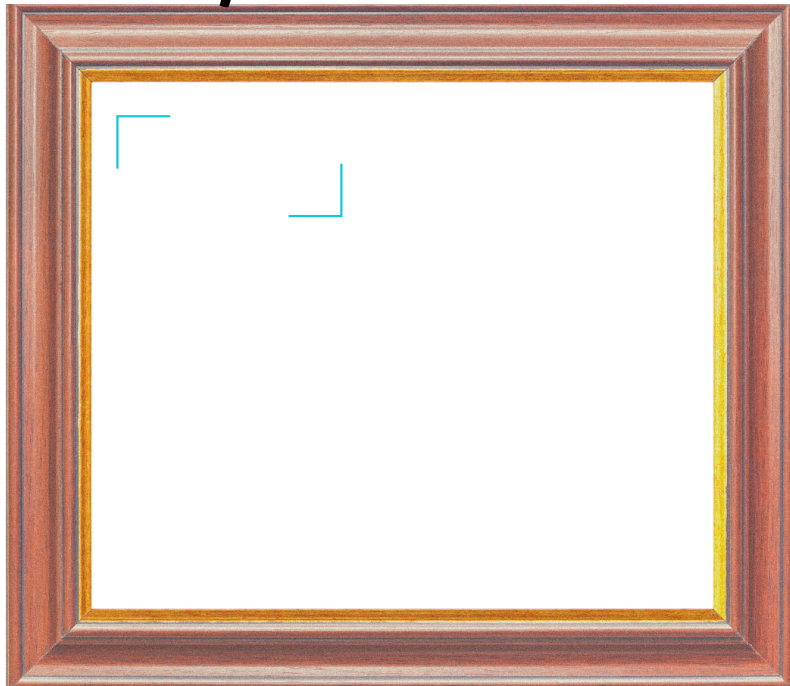
Now what are they I hear you say? They were little portraits of loved ones that you kept with you to remind you of them. Sometimes they were given as gifts if someone was going to be away for some time.



How do you carry pictures of your family and friends today? I bet you have lots. And you don't need to sit for hours to get a picture!

Let's make a miniature collection.

You can use some photos that you like. Print off your favourite ones.



**Who do you
have in
your
collection?**



A Friend is....

In the box below draw a picture of what it looks like to be a good friend and then write a sentence starting with 'A friend is..'